

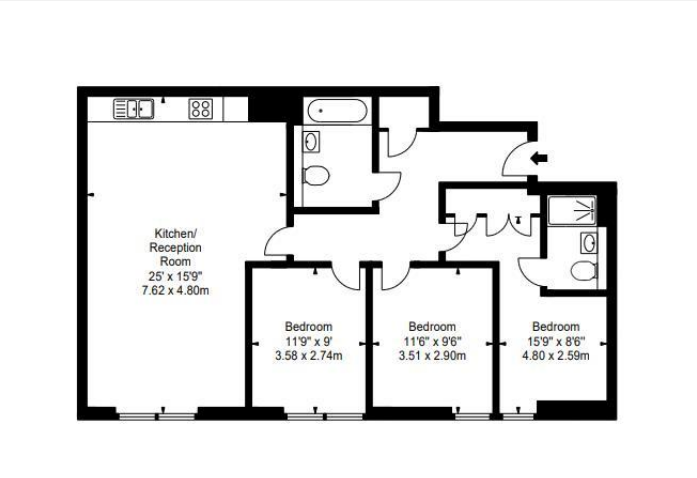
# RIVERHOMES

**Merchant Square  
Westminster W2**

**£7,345 per month  
Furnished**



Situated on the 8th floor of this prestigious building, this apartment offers great views across the London skyline and Grand Union Canal. This spacious and bright apartment comprises a beautiful reception room with a new and modern open plan kitchen, three bedrooms and two bathrooms. The building itself is located in the Paddington Basin and features a concierge, lift service and secure underground parking is included. The apartment offers easy access to superb transport links such as Paddington Train Station (Bakerloo, Hammersmith & City, Circle, District lines and Heathrow express) Edgware Road (Circle, District and Bakerloo lines).



## ENERGY PERFORMANCE CERTIFICATE

Score	Energy rating	Current	Potential
92+	A		
81-91	B	85 B	85 B
69-80	C		
55-68	D		
39-54	E		
21-38	F		
1-20	G		

## KEY INFORMATION

**Local authority:** Royal Borough of Westminster City

**Internal area:** 944 sq. ft. / 87.7 sq. m.

**No. of bedrooms:** 3